

Phylogenetic Tree (MurA)

E. Griffiths and R.S. Gupta (2006) J Mol Evol. 63(2):283-296

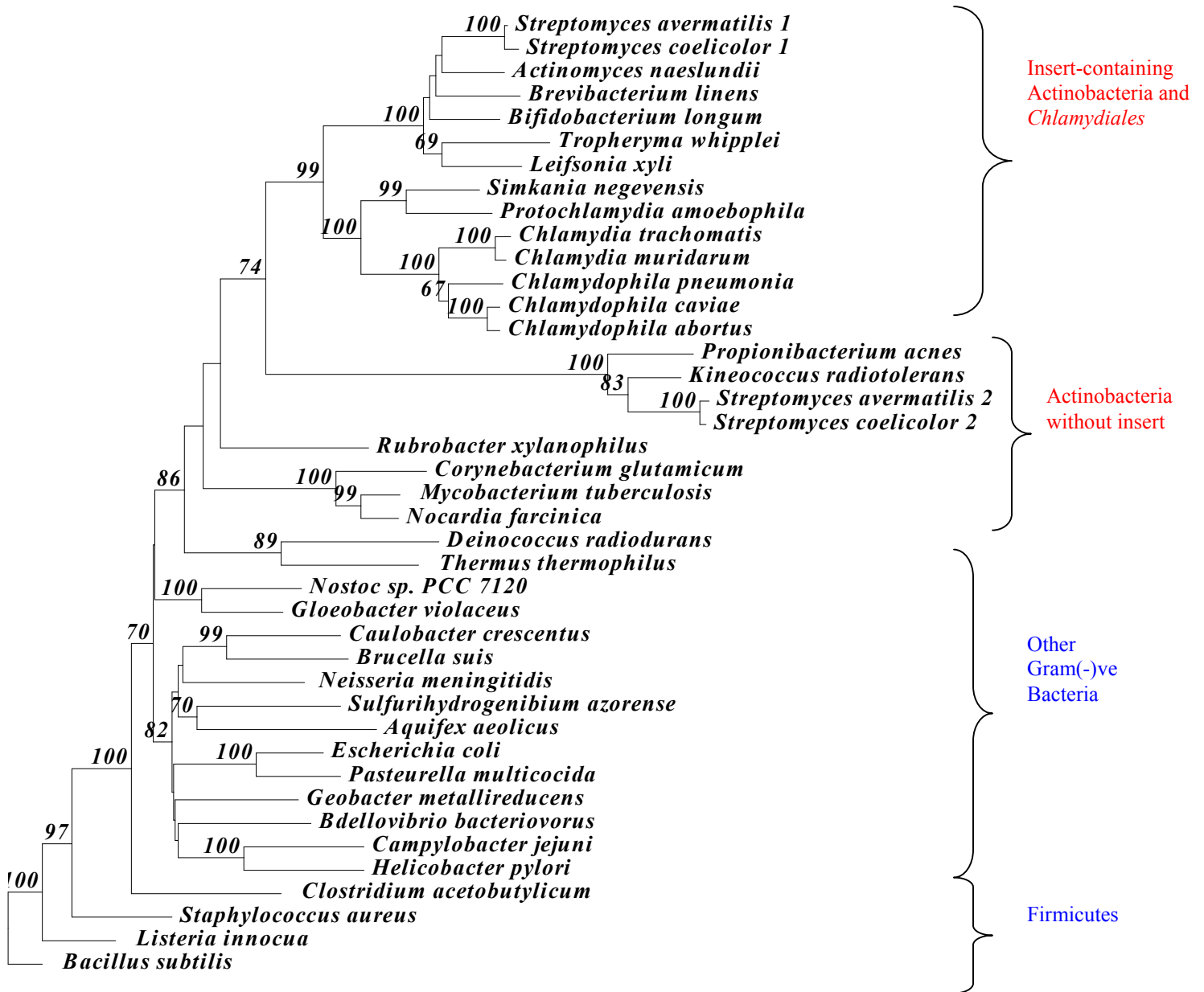


Figure 6. A neighbor-joining distance tree based on MurA sequences showing the branching of the *Chlamydiales* with the insert-containing Actinobacterial species. The tree was bootstrap score >50% are shown.