

Phylogenetic Tree (CTP Synthetase)

B. Gao and R.S. Gupta (2005) IJSEM 55: 2401-2412

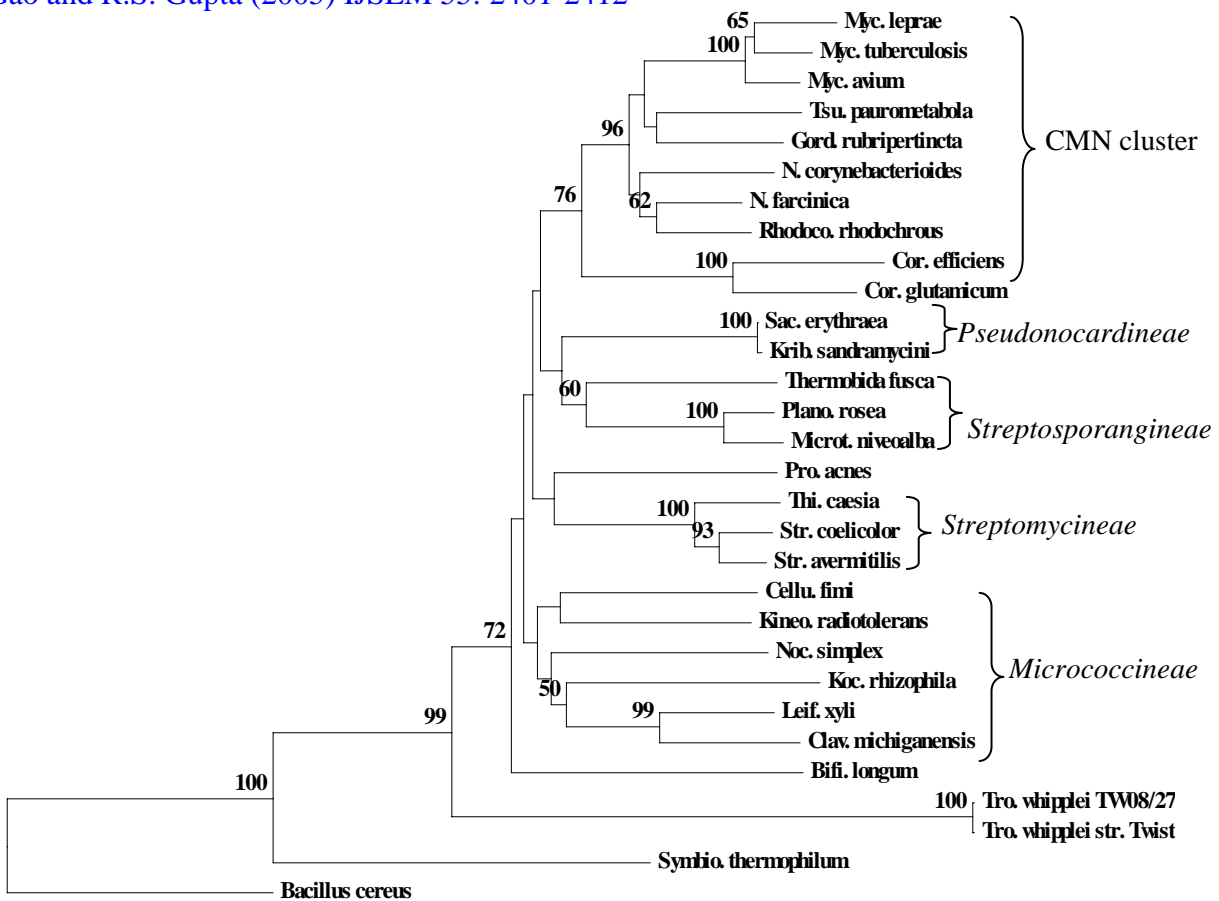


Fig. 6 Neighbor-joining distance tree based on CTP synthetase protein sequences. The tree is based on 330 aa, excluding all indels. The root of the tree has been arbitrarily assigned *Bacillus cereus* from *Firmicutes*, which based on our work on signature sequences is indicated to be one of the earliest branching phyla within *Bacteria*. The bootstrap scores for various nodes which were higher than 50 are indicated.